



EE MODELS

Merlo's factories in San Defendente di Cervasca (Cuneo) cover an area of 300,000 m² (with 220,000 m² inside facilities)



1. Merlo SpA main offices
2. Final assembly lines
3. Lines for assembling components and cabs
4. Moulding of technopolymers
5. Automated storing and shipping centre
6. Machines plus attachments shipping centre
7. Final quality control
8. Technological centre
9. Steel and structural assembly lines centre
10. 3M attachments
11. CFRM (Training & Research Centre)

The Merlo Group

N° 1 for technology and safety

The Merlo brand has always been synonymous with advanced technology in the telehandler field and our history, since 1964, is hallmarked by experience based on determination and passion. The development of complex products, from the idea to the result, from design to sales, means being able to propose orientations for the most competitive markets. The outcome of our efforts are compact, easy to handle telehandlers ensuring incomparable operating performance, comfort, efficiency and safety. At Agritechnica 2013, three important awards were received that clearly demonstrate the technological and innovative superiority of our products:

- Turbofarmer 42.7 Hybrid: Gold Medal for innovation at Agritechnica.
- Turbofarmer II: Machine of the year 2014 in the "handling and logistics" category.
- Multifarmer: Selected as a "milestone" in agriculture.

The new modular Medium Duty and Compact Turbofarmer range was named «Machine of the Year» 2015 at Sima 2015 in the handling and logistics sector.

- > 1.100 employees
- Surface area of 300,000 m² of which 220,000 m² are indoors
- 90% exports
- 600 dealers all over the world
- 8% of turnover invested in R & D
- 60 robots



Automated boom bending workstation



Roto robotised welding of the chassis

Merlo presents the range of EE products for global markets
Italian technology from Merlo has been at the forefront of the market for 50 years and is always future-oriented



	MODEL	Maximum lifting height (m)	Maximum capacity (kg)	Engine (kW/HP)	Maximum speed (km/h)	Hydraulic system	Width (mm)	Height (mm)	Length (mm)	Stabilisers	Levelling	Boom side-shift
COMPACT	P27.6	5.9	2700	36/50	25	Gears	1840	1920	3910	-	-	-
	P27.6 EE	5.9	2700	55/75	40	Gears	1840	1920	3910	-	-	-
	TF33.7 100 G EE	6.6	3300	74/100	40	Gears	2100	2120	4310	-	-	-
	TF30.9 100 G EE	8.6	3000	74/100	40	Gears	2100	2120	4335	-	-	-
	TF33.7 100 EE	6.6	3300	74/100	40	Load Sensing	2100	2120	4310	-	-	-
	TF33.9 100 EE	8.6	3000	74/100	40	Load Sensing	2100	2120	4335	-	-	-
TURBOFARMER	TF35.7 100 G EE	6.6	3500	74/100	40	Gears	2250	2250	4335	-	-	-
	TF33.9 100 G EE	8.6	3300	74/100	40	Gears	2250	2250	4365	-	-	-
	TF35.7 100 EE	6.6	3500	74/100	40	Load Sensing	2250	2250	4335	-	-	-
	TF33.9 100 EE	8.6	3300	74/100	40	Load Sensing	2250	2250	4365	-	-	-
	TF42.7 100 EE	7,1	4200	74/100	40	Load Sensing	2250	2465	4487	-	-	-
	TF38.10 100 EE	9.6	3800	74/100	40	Load Sensing	2250	2465	4487	-	-	-
PANORAMIC WITH STABILIZERS	P38.13 EE	12.6	3800	74/100	40	Load Sensing	2220	2440	5240	Yes	Yes	Yes
	P40.17 EE	16.7	4000	74/100	40	Load Sensing	2400	2510	5795	Yes	Yes	Yes
MULTIFARMER	MF40.7CS EE	6.8	4000	115/156	40	Load Sensing	2350	2525	5310	-	Yes	-
	MF40.9CS EE	8.8	4000	115/156	40	Load Sensing	2350	2525	5490	-	Yes	-
HIGH CAPACITY	P60.10 EE	9,5	6000	74/100	40	Load Sensing	2330	2440	5345	-	Yes	Yes
	P72.10 EE	9,4	7200	74/100	40	Load Sensing	2330	2440	5345	-	Yes	Yes
	P120.10 EE	9.8	12000	93/126	40	Load Sensing	2400	2850	5740	-	Yes	Yes

	MODEL	Maximum lifting height (m)	Maximum capacity (kg)	Engine (kW/HP)	Maximum speed (km/h)	Hydraulic system	Width (mm)	Height (mm)	Length (mm)	Stabilisers	Turret rotation
ROTO	ROTO 38.16 EE	15.7	3800	74/100	25	Load Sensing	2240	2850	6240	On/Off	415°
	ROTO 45.21 MCSS EE	20,8	4500	93/126	40	Load Sensing	2400	2950	6600	Multiposition	Continuous

	MODEL	Total unladen weight (kg)	Concrete yield capacity (Slump 8 cm max)	Drum volume (l)	Loading bucket volume (l)	Water tank capacity (l)	Drum rotation speed (rpm)	Speed (km/h)		Maximum unloading height	
								1 st gear	2 nd gear	- without chute	- with chute
DBM	DBM 2500 EV	6100	2500	3500	700	800	0-26	7	25	1930	1715
	DBM 3500 EV	7200	3500	5000	700	950	0-18	11	40	2285	2100

- ✓ The only one in its category with a maximum speed of 40 km/h (75HP)
- ✓ Continuous gearbox from 0 to 40 km/h without interrupting torque
- ✓ Largest cab in the category (1010 mm)

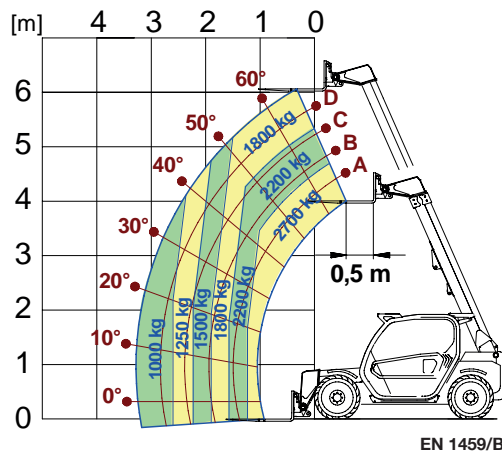


SUPER COMPACT

New P27.6: a practical, versatile, easy to handle and compact telehandler

The most comfortable and high performance model in its category

P27.6/P27.6 EE WITH FORKS



Merlo has developed a new high-performance compact telehandler. Compactness, lifting capacity, traction, comfort and high-level safety are the special features of the new Merlo P27.6.

With a boom which extends to more than 6 metres in height for a lifted load of 2.7 tonnes, the new P27.6 has the same modular cab as its big brothers, offering astounding space and visibility - unique in its category.

With a top speed of 40 km/h (55kW model), the P27.6 handler is unrivalled in its class, and is the undisputed leader on the market.



TECHNICAL INFORMATION

	P27.6	P27.6 EE
Total unladen mass, with forks (kg)	4500	4750
Maximum capacity (kg)	2700	2700
Lifting height (m)	6.1	6.1
Turbo engine (brand/cylinders)	Kubota/4	Kubota/4
Tier 3 engine power (kW/HP)	36/50	55/75
Maximum speed (km/h)	25	40
Hydraulic system	Gears	Gears
FOPS (ISO 3449) and ROPS (ISO 3471) cab	●	●
LED working lights	○	○
Width (mm)	1840	1840
Height (mm)	1920	1920
Length (mm)	3910	3910

● As standard. ○ On request.



- ✓ Largest cab in the category (1010 mm).
- ✓ The only one in its category with a maximum speed of 40 km/h as standard
- ✓ Reverse shuttle on joystick and on steering wheel (Dual Control)
- ✓ Excellent steering
- ✓ Fan Drive standard

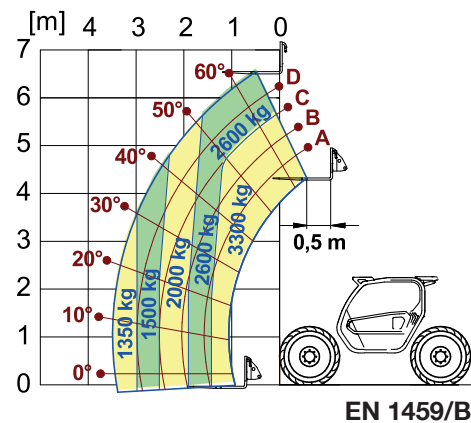


COMPACT MODELS

A range of compact telehandlers, maximum performance and small overall dimensions

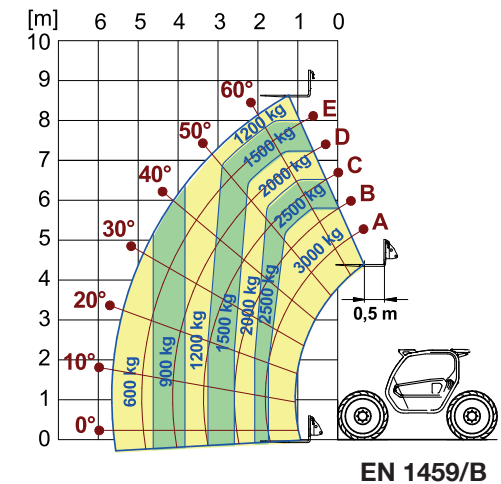
Tier 3 4-cylinder engines, 100 HP for maximum performance and versatility

TF 33.7 EE WITH FORKS



The TF30.9 EE and TF33.7 EE models of the Compact range have also been designed for agricultural, livestock, poultry and nursery businesses, as well as for building and construction work. The TF30.9 EE and TF33.7 EE are equipped with Tier 3 74kW/100 HP engines. They can carry out company handling jobs, up to 3.3 tonnes, to lift loads of up to 9 metres in height and can be offered in version L (Low Profile) to reduce the height to 2,02 meters.

TF 30.9 EE WITH FORKS



TECHNICAL INFORMATION TF33.7 100 G EE TF30.9 100 G EE TF33.7 100 EE TF30.9 100 EE

Total unladen mass, with forks (kg)	6450	6650	6450	6650
Maximum capacity (kg)	3300	3000	3300	3000
Lifting height (m)	6,6	8,6	6,6	8,6
Tier 3 engine power (kW/CV)	74/100	74/100	74/100	74/100
Maximum speed (km/h)	40	40	40	40
Hydraulic system	Gears	Gears	LS	LS
FOPS (ISO 3449) and ROPS (ISO 3471) cab	●	●	●	●
Width (mm)	2100	2100	2100	2100
Height (mm)	2120/2020 ⁽¹⁾	2120/2020 ⁽¹⁾	2120/2020 ⁽¹⁾	2120/2020 ⁽¹⁾
Length (mm)	4310	4335	4310	4335

⁽¹⁾Version with standard cabin and Low Profile. ● As standard. ○ On request.





- ✓ Fan Drive standard
- ✓ The widest cab in the category (1010 mm)
- ✓ Level II ROPS and FOPS cab compliant
- ✓ "Dual Control" reverse shuttle on joystick and steering wheel
- ✓ Maximum speed 40 km/h as standard
- ✓ Two-speed hydrostatic transmission
- ✓ Load-Sensing or Gear pump

MEDIUM DUTY

Modular telehandlers Turbofarmer Medium Duty

Cutting-edge technology and performance



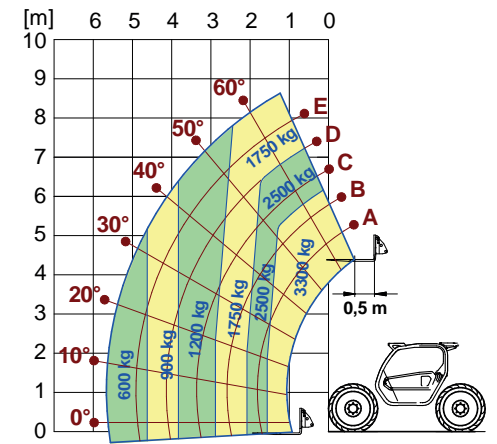
The Panoramic family is now expanded thanks to a new range of telehandlers in one of the most important sectors of the building and construction sector - 3.3 and 3.5 tonnes for heights of 7 and 9 metres - named Medium Duty.

The range has two basic models - TF35.7 EE and TF33.9 EE - available in 4 different versions, with 100HP engines. These models provide compact dimensions among the best in their category, thereby ensuring maximum safety, comfort and productivity.

TECHNICAL INFORMATION	TF35.7 100 G EE	TF35.7 100 EE	TF33.9 100 G EE	TF33.9 100 EE
Total unladen mass, with forks (kg)	6500	6500	6700	6700
Maximum capacity (kg)	3500	3500	3300	3300
Lifting height (m)	6,6	6,6	8,6	8,6
Tier 3 engine power (kW/HP)	74/100	74/100	74/100	74/100
Maximum speed (km/h)	40	40	40	40
Hydraulic system	Gears	Load Sensing	Gears	Load Sensing
Gearbox	2 speeds	2 speeds	2 speeds	2 speeds

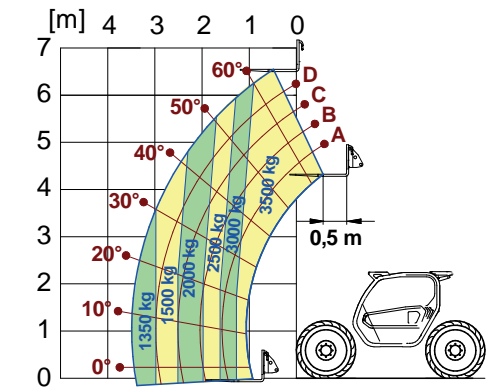
● As standard. ○ On request.

TF 33.9 EE WITH FORKS



EN 1459/B

TF 35.7 EE WITH FORKS



EN 1459/B

DIMENSIONS	TF35.7 EE	TF33.9 EE
Height (mm)	2250	2250
Width (mm)	2250	2250
Length (mm)	4335	4365



TF42.7 100 EE AND TF38.10 100 EE VERSIONS

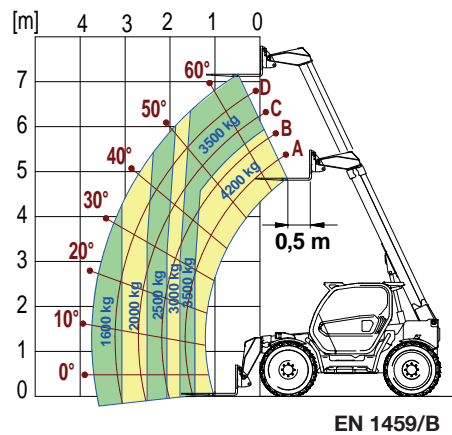
- ✓ Cab complies with Level II ROPS and FOPS standards
- ✓ Broadest cab in the category (1010 mm).
- ✓ Standard cab on silent-block
- ✓ Tier 3 100 HP engines
- ✓ Booms from 7 to 10 metres Capacities from 3.8 to 4.2 tonnes
- ✓ Quick coupling of Tac-Lock attachments
- ✓ Hydraulics: Load Sensing
- ✓ Merlo 2-speed hydrostatic transmission

TURBOFARMER

The new modular telehandlers for the construction sector, from 7 to 10 metres

Merlo technology at the service of construction companies

TF42.7 100 EE WITH FORKS



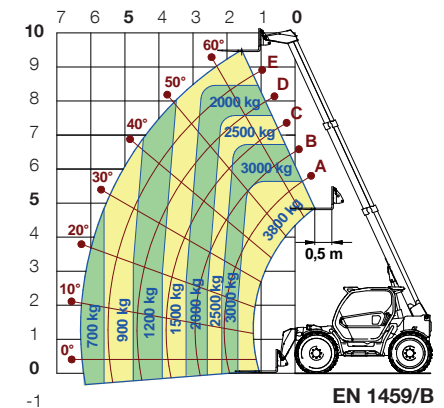
TECHNICAL INFORMATION

TF42.7 100 EE TF38.10 100 EE

Total unladen mass, without forks (kg)	7450	7900
Maximum capacity (kg)	4200	3800
Lifting height (m)	7.1	9.5
Maximum reach (m)	3.7	6.3
Height at maximum capacity (m)	6.2	5.6
Maximum operating reach (m)	1.5	1.7
Capacity at maximum height (kg)	3500	1500
Capacity at maximum reach (kg)	1600	700
Turbo engine (brand/cylinders)	Kubota/4	Kubota/4
Tier 3 engine power (kW/CV)	74/100	74/100
Maximum speed (km/h)	40	40
Fan Drive system	●	●
Fixed cab	●	●
Transmission	2 speeds	2 speeds
Hydraulic system	Load Sensing	Load Sensing
Controls	Joystick	Joystick
Dual Control Reverse Shuttle (joystick/steering wheel)	●	●
Acoustic and light alarm and lockout of the aggravating movements	●	●
Width (mm)	2250	2250
Height (mm)	2465	2465
Length (mm)	4487	4487

● As standard. ○ On request.

TF38.10 100 EE WITH FORKS





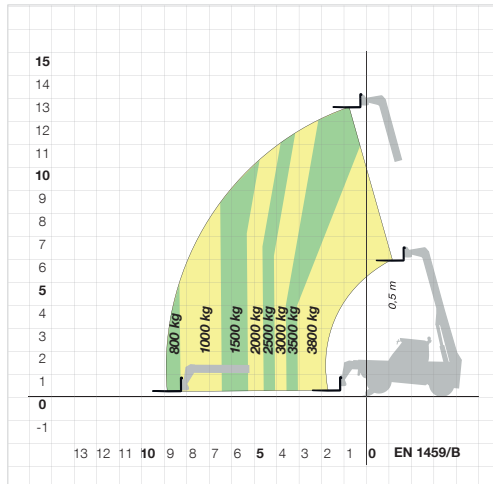
- ✓ Cab complies with Level II ROPS and FOPS standards
- ✓ M CDC Light Merlo with light indicator
- ✓ Tilt correction on the chassis
- ✓ BSS boom suspension (optional)
- ✓ EAS axle suspensions (optional)
- ✓ Independent stabilisers
- ✓ Tier 3 100 HP engine
- ✓ Load Sensing hydraulic pump
- ✓ Quick coupling of the Tac-Lock attachments

PANORAMIC WITH STABILISERS

P38.13 EE and P40.17 EE stabilised Panoramic

Record performances and reliability

P38.13 EE WITH FORKS ON STABILISERS

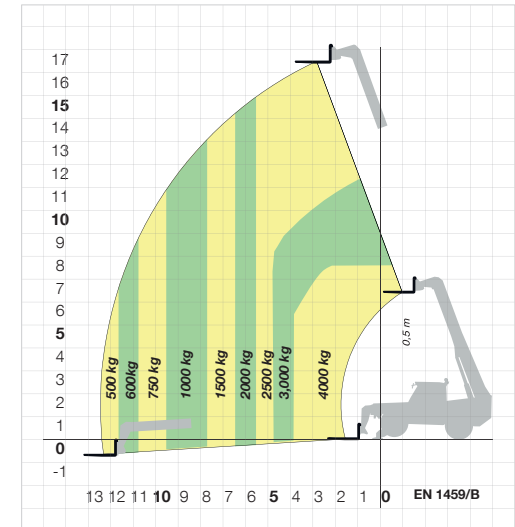


TECHNICAL INFORMATION

	P38.13 EE	P40.17 EE
Total unladen mass, with forks (kg)	8650	10580
Maximum capacity (kg)	3800	4000
Lifting height (m)	12.6	16.7
Maximum reach (m)	8,7	12,5
Height at maximum capacity (m)	8	7.7
Maximum operating reach (m)	3	3,9
Capacity at maximum height (kg)	3500	2500
Capacity at maximum reach (kg)	800	500
Lateral boom movement (mm)	±345	±435
Crossways angle corrector (%)	±10	±10
Turbo engine (brand/cylinders)	Kubota/4	Kubota/4
Tier 3 engine power (kW/CV)	74/100	74/100
Maximum speed (km/h)	40	40
Controls	Levers	Levers
Electromechanical joystick	○	○
Electronic joystick	○	○
Independent front stabilisers	●	●
Levelling	●	●
Hydrostatic transmission	2 speeds	2 speeds
Load Sensing hydraulic system (bar-l/min)	210-115	210-115
Width (mm)	2220	2400
Height (mm)	2440	2510
Length (mm)	5240	5795

● As standard. ○ On request.

P40.17 EE WITH FORKS ON STABILISERS



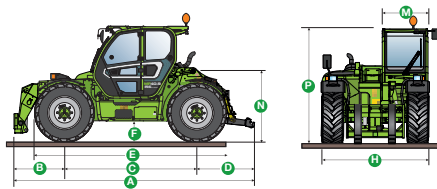


- ✓ Suspended cab, the largest in the category , complete with multi-function arm-rests
- ✓ Tilting system as standard
- ✓ BSS Boom Suspension System (Optional)
- ✓ M CVTronic transmission. from 0 to 40 km/h without torque interruption
- ✓ Hydraulic lift electronically managed, sensors on the lower links. 7 tonnes lifting capacity
- ✓ Category III 3-point linkage fitted with quick couplers
- ✓ 135 HP to the PTO, electronically controlled mechanical meshing
- ✓ Hydraulic distributors managed by electronic joysticks and rear hydraulic quick couplers
- ✓ Rear differential lock

MULTIFARMER

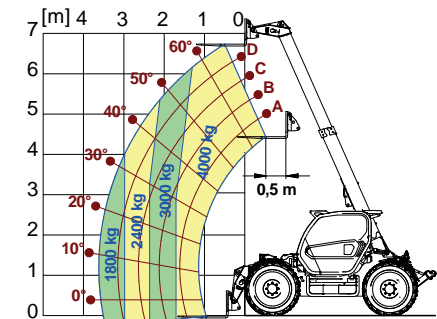
The range of telehandlers with electronic lifting, 3-point linkage and mechanical PTO

The Merlo telescopic tractor



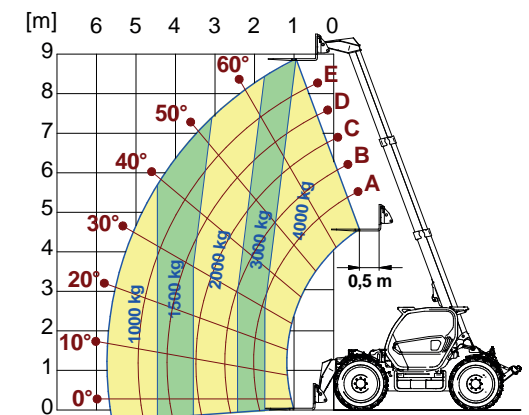
The Multifarmer family and its MF40.7 CS EE & MF40.9 CS EE models are Heavy Duty telehandlers with booms capable of handling 4 tonnes loads at 7 or 9 metres height. They are equipped with the M CDC anti-tip over system and 156 HP EPD-controlled engines that reduce fuel consumption by 18%. The Multifarmers can be used for handling materials as well as for conventional tractor applications. In fact, MF 3-point linkage, ELC, and PTO are designed to suit any implement used by conventional tractors, for soil preparation and for haulage operations.

MF40.7 CS EE WITH FORKS



EN 1459/B

MF40.9 CS EE WITH FORKS



EN 1459/B

DIMENSIONS	MF40.7 CS EE	MF40.9 CS EE
A (mm)	5310	5490
B (mm)	1110	1290
C (mm)	2920	2920
D (mm)	1280	1280
E (mm)	4270	4270
F (mm)	450	450
H (mm)	2350	2350
M (mm)	1010	1010
N (mm)	1550	1550
P (mm)	2525 min-2585 med	2525 min-2585 med
R (mm)	4210	4210
S (mm)	4890	5030
Z (mm)	850	850

TECHNICAL INFORMATION	MF40.7 CS EE	MF40.9 CS EE
Total unladen mass, without forks (kg)	8700	9150
Maximum capacity (kg)	4000	4000
Lifting height (m)	6,8	8,8
Engine power (kW/HP)	115/156	115/156
Maximum speed (km/h)	40	40
Hydraulic Load-Sensing pump (bar-l/min)	210/150	210/150
Flow Sharing Distributor	●	●
Change of speed	CVTronic	CVTronic
"CS" Suspended cab	●	●
Tilting Chassis (angle correction)	●	●
EPD Eco Power Drive	EPD Top	EPD Top
Mechanical PTO (540/1000)	●	●
3-point linkage (kg)	7000	7000
M CDC Dynamic Load Control	●	●

● As standard. ○ On request.

- ✓ Largest cab in category Best comfort level
- ✓ Cab complies with ROPS and FOPS level II standards
- ✓ Tilt corrector and boom side shift as standard
- ✓ Load Sensing hydraulics as standard

P60.10 EE and P72.10 EE:

- ✓ Engines: powers of 100 HP
- ✓ Hydrostatic transmission with 2 two speeds

P120.10 EE:

- ✓ HM Power of 126 HP
- ✓ Regenerative system (as standard)
- ✓ Electronic joystick as standard



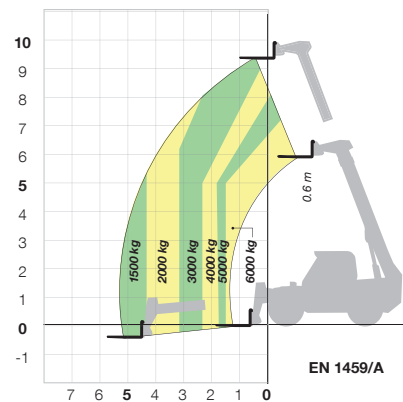
HIGH CAPACITY PANORAMIC EE

High Capacity Panoramic, high-spec for high performance

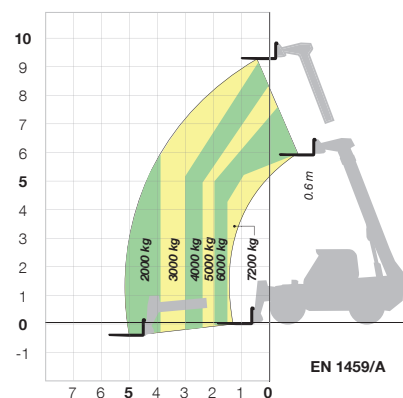
Even more advantages and benefits



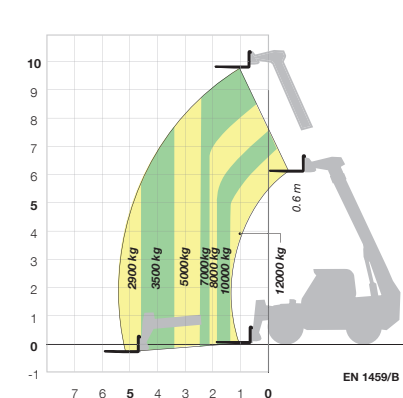
P60.10 EE WITH FORKS



P72.10 EE WITH FORKS



P120.10 EE WITH FORKS



In the class of «high capacity» telescopic handlers Merlo offers three models (P60.10 EE, P72.10 EE and P120.10 EE) with capacities of 6 - 7.2 - 12 tonnes and lifting heights of 10 metres.

TECHNICAL INFORMATION	P60.10 EE	P72.10 EE	P120.10 EE
Total unladen mass, without forks (kg)	9800	10650	15650
Maximum capacity (kg)	6000	7200	12000
Lifting height (m)	9,5	9,4	9.8
Turbo engine (brand/cylinders)	Kubota/4	Kubota/4	Iveco/4
Tier 3 engine power (kW/CV)	74.5/100	74.5/100	93/126
Maximum speed (km/h)	40	40	40
Load Sensing hydraulic system (bar-l/min)	240/115	240/115	210/119
Flow Sharing Distributor	-	-	●
Change of speed	2 speeds	2 speeds	2 speeds
Chassis Levelling plus boom side-shift	●	●	●
Regenerative system + Automatic accelerator	-	-	●
EAS hydro-pneumatic suspension	○	-	○
Electronic joystick	○	○	●
Electromechanical joystick	●	●	-
MCDC light with indicator light	○	○	○
Reverse shuttle at steering wheel	●	●	-
Dual Control Reverse Shuttle (joystick/steering wheel)	-	-	●
Width (mm)	2330	2330	2450
Height (mm)	2440	2440	2850
Length (mm)	5345	5345	5790

● As standard. ○ On request.



ROTO EE

The telehandler with rotating turret by definition

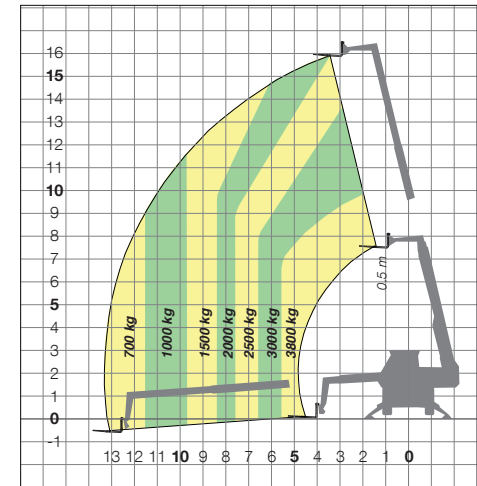
ROTO 38.16 EE and 45.21 MCSS EE capacities of 3800 kg and 4500 kg, heights of 16 and 21 m



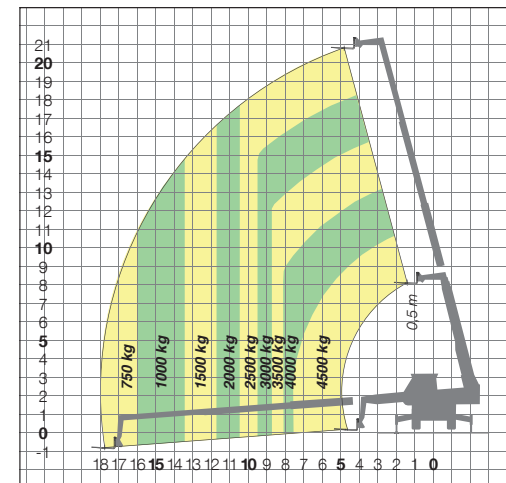
TECHNICAL INFORMATION	38.16 EE	45.21 MCSS EE
Total unladen mass, with forks (kg)	11800	15050
Maximum capacity (kg)	3800	4500
Lifting height (m)	15.7	20.8
Turret rotation (degrees)	±208°	Continuous
Turbo engine (brand/cylinders)	Kubota/4	FPT/4
Tier 3 engine power (kW/CV)	74.5/100	93/126
Maximum speed (km/h)	25	40
LS Load Sensing hydraulic system (bar-l/min)	210-115	210-115
Electrical system (V)	12	12
Stabilisers with automatic positioning	●	●
Cab compliant with FOPS (ISO 3449)	●	●
Electromechanical joystick	●	-
Electronic joystick	-	●
Tac-Lock attachments locking	●	●
Auxiliary hydraulic service on boom	●	●
Hydrostatic transmission	●	●
Finger-Touch reverse shuttle	●	●
Permanent four-wheel drive	●	●
Four-wheel steering	●	●
Remote control	○	○
Manual air conditioning	○	○
Windscreen wiper on roof window	○	○
Provision for platform	●	●
Front and upper blinds	○	○

Performances refer to the machine equipped with forks, operating on stabilisers. ● As standard. ○ On request.

ROTO 38.16 EE
FORKS ON STABILISERS ON 360°



ROTO 45.21 MCSS EE
FORKS ON STABILISERS ON 360°





DBM

With forty years of experience in the design and manufacture of self-loading concrete mixers, Merlo offers a **compact and efficient range which is ideal for places that are hard to reach** for the conventional concrete mixers or for those needing to **produce high quality concrete right at the building site.**

The DBM models make it possible to produce quickly at the work site mixtures of various types, from the most fluid mortars to low slump concrete, in the quantities requested and at the precise moment it is poured, with innumerable advantages compared to the traditional system of pre-packaged concrete.



A proven technology, for economic and efficient production, transport and pouring of concrete

2 models of self-loading concrete mixers with 2,500 and 3,500 litres capacity, with 700 litres loader

MODEL	DBM 2500	DBM 3500
Total unladen weight (kg)	6100	7200
Concrete yield capacity (Slump 8 cm max)	2500	3500
Drum geometrical volume (l)	3500	5000
Loader capacity (l)	700	700
Water tank capacity (l)	800	950
Water pump capacity (l/min)	250	250
Maximum unloading height		
• without under conveyor chute (mm)	1930	2285
• with chute (mm)	1715	2100
Drum rotation speed (rpm)	0-26	0-18
4-cylinder engine with low emissions (Euro 3)	Perkins	Deutz
Type	Turbo	Turbo
Power at 2400 rpm (97/68/CE) (kW/HP)	74.5/101	75/102
Steering mode	Four wheel drive with three steering modes	
Disc brakes on all four wheels	Automatically locking parking brake	
Maximum operating slope		
• unladen (%)	55	50
• fully laden (%)	45	40
Maximum slope (%)	15	15
1 st gear	7 ⁽¹⁾	11
2 nd gear	25 ⁽¹⁾	40

(1) Optional speed of 11-40 km/h.





MERLO CDC DISPLAY

1. With attachment in use
2. Work area
3. Load positioning (in work area)
4. Load detection menu
5. Operating parameters
6. Work information
7. Stability index

Merlo CDC - Dynamic Load Control:

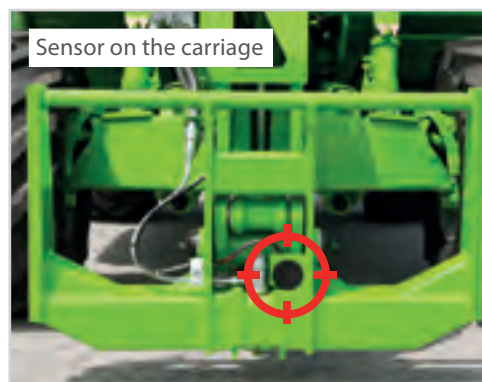
The system that we have developed is fully integrated with the MDCDC system and uses some of the latter's operator information systems such as the new 8.5" graphic colour display, the progressive bar graph indicating vehicle stability and a buzzer. With these tools the operator will be informed in real time of the state of stability (longitudinal) of the telehandler, so as to be able to operate in complete safety up to the vehicle's capacity limit.

Available as option on the following models: TF42.7 100 EE, TF38.10 100 EE, P38.13 EE, P40.17 EE, P60.10 EE, P72.10 EE and P120.10 EE.



Safety/Comfort

Level 2 type-approved ROPS and FOPS cab to provide maximum "passive" safety. Maximum visibility in all directions thanks to the low fulcrum of the telescopic boom and the longitudinal engine: excellent front, side, rear and upwards visibility so that the operator can follow the boom along its entire travel.



Automatic recognition of the attachment

The Merlo CDC permits the mounted attachment to be automatically recognised and its behaviour to be calibrated as a consequence on the basis of the specific load charts.

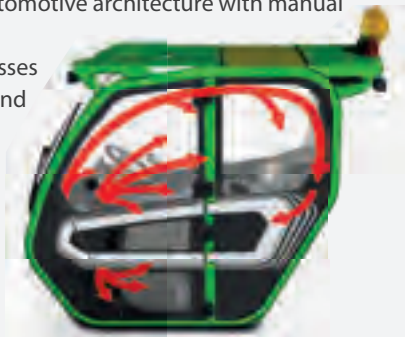
TECHNOLOGIES

New cab

Is the widest on the market at 1010 mm. Visibility has always been one of the strengths of Merlo's vehicles. Designers have consolidated this feature by adopting a curved wind-shield named «Merlo Sky-View» which ensures unrestricted visibility of the load even when the telescopic boom is fully extended. The ergonomics of the driving seat maximised by the steering wheel and by the tilting digital instrument panel (for now available on TF42.7-100 EE and TF38.10-100 EE)

New air conditioning system

Designed around a typical automotive architecture with manual selection of the required temperature. Incoming air passes through an anti-pollen filter and is distributed by eight vents. Defrost ventilation. The effectiveness of the system helps maintain a pleasant internal temperature even with very high external/internal differences.



Same selling point: roomy size 1010 mm

The width of the new cab is 1010 mm, for the Panoramic and Roto models the cab width is always 1010 mm, therefore it is still the widest available on the market, confirming the high standards that the Merlo cabs provide in terms of roominess, comfort and visibility.

MODULAR STANDARD CABIN

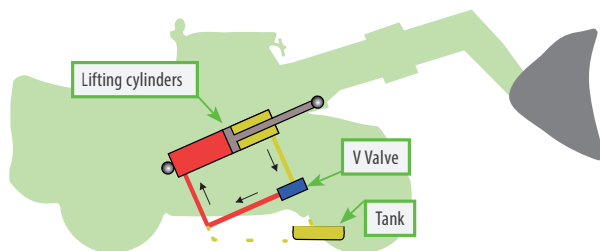


PANORAMIC CABIN



ROTO MCSS CABIN





Regenerating system

In order to increase productivity, the P120.10 EE model uses the regenerative system as standard, which has been designed to increase the angular speed of the boom when handling loads. The system makes it possible to automatically increase the speed by 36% compared to similar systems not equipped with the regenerating function

Levelling

(Panoramic with stabilisers and high capacity)

System for correcting tilt, built into the chassis, allowing the operator to correct ground slopes and work in complete safety. The combined action of the lateral inclination and the stabilisers allows the operator to further correct ground slopes on the Panoramic with stabilisers.



WITHOUT STABILISERS



WITH STABILISERS



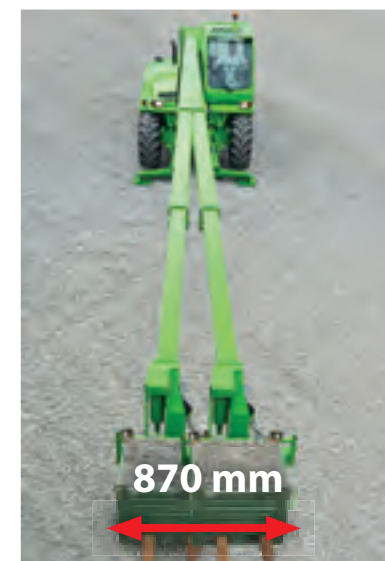
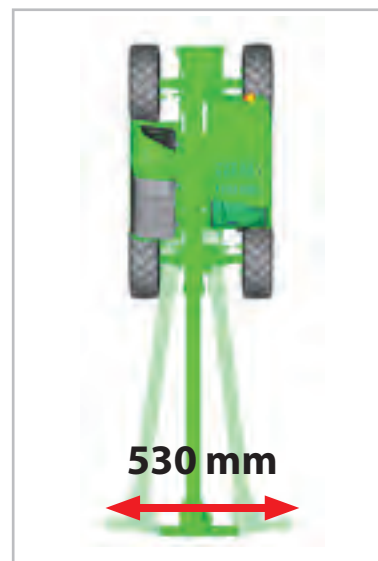
Side shift of the boom

(Panoramic with stabilisers and high capacity)

The boom can be moved sideways by the operator so that the load can be positioned with maximum precision, comfort and time-saving.

BSS hydro-pneumatic suspension of the boom (optional)

Can be activated by the operator and is automatically disengaged below 3 km/h to ensure maximum load positioning precision



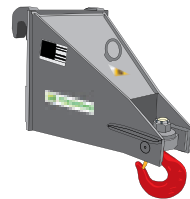
TECHNOLOGIES

From the idea to development of multi-applicability More efficiency and productivity thanks to Merlo

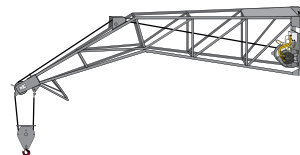
Merlo adopts simple and effective guidelines in the evolution of the product. From conception to development, everything is studied, designed and created in the Group's plants. This simple "rule" also applies to attachments. Backed by years of experience, Merlo's technicians have developed a wide range of attachments, divided by type and load capacity. The multi-function Merlo systems, immediately operative in a multitude of different applications, are among the most advanced technology to offer efficiency, comfort and above all, safety in daily work.



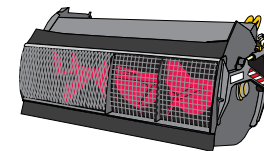
CARRIAGE-MOUNTED HOOK



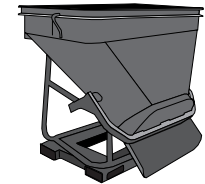
FLY JIB WITH WINCH



CONCRETE MIXING BUCKET



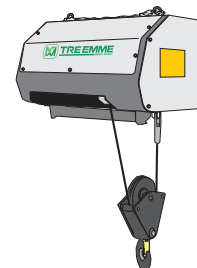
CONCRETE BUCKET



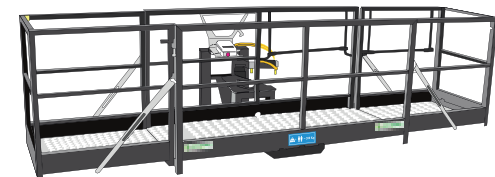
LIFTING BOOM



WINCH



THREE-SIDED EXTENSIBLE PLATFORM



OVER 50 YEARS OF CONSTANT COMMITMENT TO WORKING TOGETHER WITH YOU

- 1964** - Establishment of the Merlo Group
- 1966** - DM and DBM: the first dumper and the first self-loading concrete mixer
- 1981** - SM: the world's first telescopic handler
- 1987** - Panoramic: the world's first telehandler with side engine
- 1991** - Roto: the world's first telehandler with rotating turret
- 1996** - Turbofarmer: the first telehandler in Europe type-approved as an agricultural tractor
- 1998** - P20.6: the ultra-compact telehandlers
- 2000** - Multifarmer: the first agricultural tractor with telescopic boom
- 2001** - MM: the first forestry attachment-carrier
- 2010** - Hybrid: the first diesel/electric hybrid telehandler
- 2012** - Modular: a new concept of telescopic handler
- 2013** - Three important awards at the Agritechnica in Hanover:
 - Hybrid 42.7: gold medal for technological innovation
 - Turbofarmer II range: "machine of the year 2014"
 - Multifarmer 40.9: "a milestone in agricultural machinery"
- 2015** - New modular Medium Duty and Compact Turbofarmer named "machine of the year" 2015 at Sima in Paris



MERLO S.P.A.

Via Nazionale, 9 - 12010 S. Defendente di Cervasca - Cuneo - Italia

Tel. +39 0171 614111 - Fax +39 0171 684101

www.merlo.com - info@merlo.com

The Telehandlers outlined in this documentation can be equipped with optional or special accessories that are not included in standard equipment but only on request.

In certain countries, not all models or attachments may be available because of market or regulatory restrictions.

Technical data and information are up-to-date at the time of printing this documentation. Merlo reserves the right to make modifications arising from natural technological evolution without any obligation on its part.

Your trusted Merlo Dealer will be delighted to provide you with all updates concerning our products and services.