

REACH STACKER FOR HANDLING CONTAINER CRS4532 **45TON**



All rights reserved.
Any doubt, please contact us.
Website www.maxspecialtruck.com

Maximal Forklift (Zhejiang) Co., Ltd.

Address No.1, Jinxin Road, Lushan
Industrial area, Fuyang, Zhejiang China
Tel 0086 571 28001570
Fax 0086 571 28001569

Email info@maxforklift.com
For service
service@maxforklift.com
For spare parts
parts@maxforklift.com



PERFORMANCE ADVANTAGES

Scientific operation.

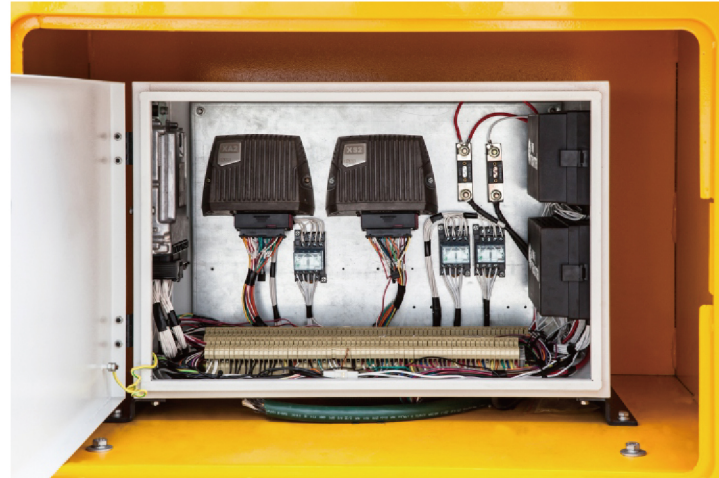
Adopt Parker electric control system, with artificial intelligence display, fault diagnose system and easily maintenance.

High efficiency and reliable.

CAN BUS system, with immediate response and large data information. Also this CAN-BUS system delivers full diagnosis capacities, simplifying the servicing of the truck with anti-interference.

High safety.

Equipped with Rear camera surveillance system and high-capacity fire extinguisher, much more safe and high efficiency.



Stable and easy maintenance.

Adopt complete Parker hydraulic system, international standard hydraulic parts, impact resistant, low noise, stable performance and easy maintenance.

Comfortable driving.

Equipped with tilting cab and hood, to ensure access to major components for inspection and service. Also this makes the wide and clear view with little noisy inside.

SAFETY DEVICE

1

Anti-rollover protection device.

Datas from boom sensors will transfer through CAN bus system for confirming whether in safety work condition. It will buzz in dangerous situation and warning to operator stop running. Boom will only shrink and can't extend.

2

Engine starting protection device.

When engine start, IQAN system will receive datas from engine controller and cut signal to start motor to prevent start again.

3

Travelling protection device

Travelling protection: Close high speed gear to make high speed failure temporary, when twist locks full closed, in order to travelling with load in safety low speed.

4

Twistlock activation protection /Spreader protection.

Hydraulically activated and mechanical interlocking against faulty locking and unlocking.

Twistlocks perform interlock only when all twist locks screwing the container corner fitting and activate landed pin.

Boom only can shrink instead of extend when twist lock not full open nor full closed.

5

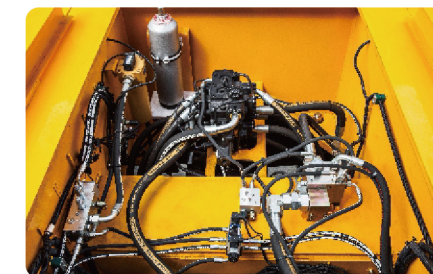
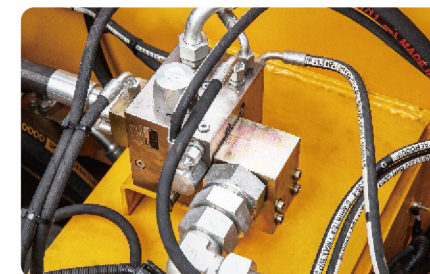
Spreader anti-swing device.

The anti-swing oil cylinder will activate when spreader swings and making damping through cross overflow valve to stop spreader swinging and make spreader stable even in harsh condition.

6

Hydraulic lock device.

There is hydraulic lock on the bottom of pitch cylinder to close oil way and stop boom action to ensure safety work, when high-pressure rubber hose is suddenly cracked.



MAIN COMPONENTS



Spreader

Sweden Spreader ELME817
Rotation angle: +105/-195°
Sidesway: ±800mm
Extension: 20'~40'
Max. Load: ≥45000KG

Maximal spreader Max918
Rotation angle: +105/-195°
Sidesway: ±800mm
Extension: 20'~40'
Max. Load: ≥45000KG

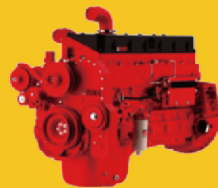
Engine



Model: VOLVO TAD1171VE
Rated output: 265kw/2100r/min
No. Of cylinder: 6-inline
Rated torque: 1785Nm/1260rpm
Emission standard: Euro IV/Tire4
Fuel consumption rate: 210g/kw-h



Model: VOLVO TAD1151VE
Rated output: 265kw/2100r/min
No. Of cylinder: 6-inline
Rated torque: 1785Nm/2100rpm
Emission standard: Euro III
Fuel consumption rate: 210g/kw-h



Model: CUMMINS QSM11-335
Rated output: 250kw/2100r/min
No. Of cylinder: 6-inline
Rated torque: 1708Nm/1400rpm
Emission standard: Euro III
Fuel consumption rate: 210g/kw-h

Transmission



DANA 14.7HR36432 transmission
Hydraulic torque converter + Gear box
Gear shifting front/rear: 4/4
Forward & reverse gear: AMT, CVT

Axle

German KESSLER drive Axle D102 PL341, equipped with several sealed, wet disc brakes and central pliers disc brake, which is maintenance free.



MAXIMAL REACH STACKER WORKING SPOT MAP



Guangxi Debao train station 1



Guangxi Debao train station 2



Liaoning



Jiangxi Ruichang 1



Jiangxi Ruichang 2



Ningbo Zhenhai Port area 1

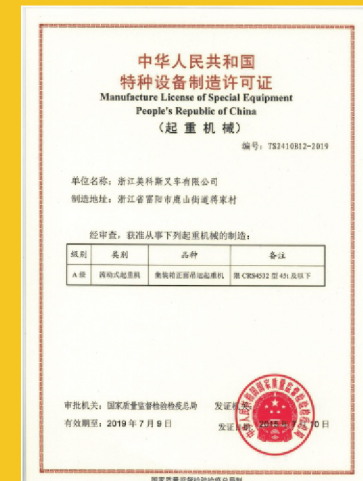


Ningbo Zhenhai Port area 2



Guangxi Pinguo train station 1

Manufacture License of
Special Equipment awarded by
People's Republic of China.



SPECIFICATION

		Model		CRS4532-MWU3 (CUMMINS QSM11) / CRS4532-MWY3 (VOLVO TAD1151VE)		
Lifting	1	Stacked Levels	Row 1-2-3	Type of Container	Unit	Lifting Capacity
	2	4x	First row	9'6"	ton-m	45-2.0
	3	5x			ton-m	43-2.0
	4	6x			ton-m	-
	5	3x	Second row	9'6"	ton-m	32-3.85
	6	4x			ton-m	32-3.85
	7	2x	Third row	9'6"	ton-m	15-6.35
	8	3x			ton-m	15-6.35
		9	Max. Lifting Height			m
performance	10	Speed	Lifting Speed(Unladen/Laden)		mm/sec	420/250
	11		Lowering Speed(Unladen/Laden)		mm/sec	360/360
	12		Forward travel speed(Unladen/Laden)		km/h	25/21
	13		Backward travel speed(Unladen/Laden)		km/h	25/21
	14	Traction(Laden)		kN	300-2km/h	
	15	Outside turning radius		mm	8000	
Weight	16	Self weight(Unladen)		ton	72	
	17	Weight Distribution	Laden	Front axle	ton	103
	18			Rear axle	ton	14
	19		Unladen	Front axle	ton	37
	20			Rear axle	ton	35
Stability	21	Front stability	Forward stability. 40T		First row	1.875
	22		Forward stability. 25T		Second row	1.806
Tyre	23	Tyre	Front wheel		in	18.00x25/PR40
	24		Rear wheel		in	18.00x25/PR40
	25		Wheelbase		mm	6000
	26		Length		mm	1675
	27		Front wheel track		mm	3030
	28		Rear wheel track		mm	2760
Hydraulic system	29	Load sense system		New second generation system		
	30	Variable displacement piston pump (new)		New second generation system		
	31	Cooling/filter system		With/with		
Cylinder volume	32	High flow main valve (new)		M402		
	33	Hydraulic oil		L	700	
Electric system	34	Diesel		L	600	
	35	Type/voltage		V	CanBus/24V	
	36	Overload system		stand	Electronic control	
	37	Color/graphics display		6.5" color display		
	38	Electronic/ proportion(tonnage/percentage)		With/with		
Cab	39	System integrity		comprehensive		
	40	Type (new)		Best in China		
	41	Cooling/heating (new)		Electronic control		
	42	Size		big		
	43	Step/handrail		With/two sides		
	44	Front step/handrail		With/fender		
Boom angle	45	Cab forward shift		Yes		
	46	Travel with door open		Yes		
	47	Min./Max.		deg	0/60	
Chassis	48	Basic design		4 sides box type		
View	49	Basic design		4 sides box type		
Noise level	50	Front, Top, Side, Back		Good		
	51	Cab interior (Leq)		dB(A)	70	

REACH STACKER CONTAINER STACKING 5 LAYERS

