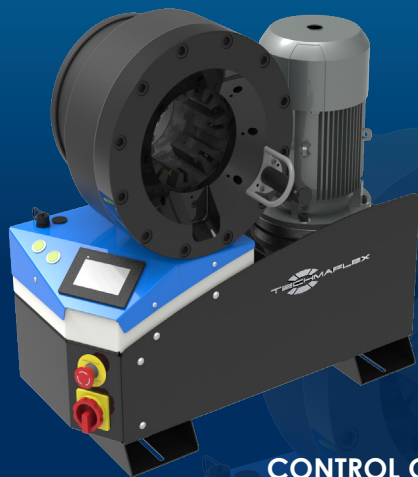


S CRIMP 350 EVO / S CRIMP 350 L

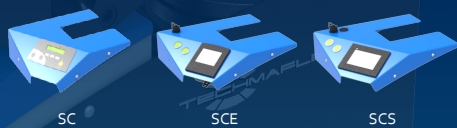
FULL SERVICE WORKSHOP
BENCHTOP; VERY HIGH CRIMP FORCE



KEY FEATURES

- Crimp force up to 350 tonnes for hoses up to 3"
- Easy to use and robust
- Automatic maintenance alerts
- Groove for 90° long drop fittings
- Also available as S CRIMP 350 L with 4.0 kW motor
- Model shown equipped with SCS control panel

CONTROL OPTIONS AVAILABLE ON REQUEST



TECHNICAL SPECIFICATIONS

CAPACITY*	NOISE LEVEL
2wb: 3" max. Textile / Suction Hose: 4" max. 4ws: 2" max. 6ws: 2" max.	<70 dB A
CRIMP RANGE	MOTOR
4 - 130 mm (0.157 - 5.118")	5.5 kW / 4 kW
CRIMP FORCE	VOLTAGES
350 t	220/240 V, 3Ph, 50 Hz 380/415 V, 3Ph, 50 Hz 208/240 V, 3Ph, 60 Hz 380/415 V, 3Ph, 60 Hz
OPENING WITH DIES	DIMENSIONS
+54 mm (+2.125")	765 x 400 x 750 mm (30 x 16 x 30")
COMPLETE OPENING	NET WEIGHT
180 mm (7.086")	262 kg (578 lb)
MASTER DIE LENGTH	TECHNICAL FEATURES
115 mm (4.523")	-Automatic maintenance alerts -Cylinder protection against dust - durable design -Also available as S CRIMP 350 EVO L with 4.0 kW Motor
STANDARD DIES	
15, 18, 21, 24, 27, 30, 33, 36, 39, 42, 45, 48, 51, 57, 62, 66, 70, 73, 76	

*Indicative capacities depending on hose and fitting type

OPTIONAL

- Maintenance Kit
- Electrical Footswitch
- Die Storage Panel
- Die Storage Table
- Die Storage Table EVO
- Quick Change Gun
- Aluminium Quick Change Gun
- Mechanical Backstop
- Die Sets for Brake & Air Conditioning Hoses
- Marking Dies
- Digital calliper
- Die Storage Panel EVO